



## Why Thai Financial Localization

### Withholding Tax (WHT)

Much of the functionality required to be localized is centered around withholding tax, which is not natively supported by W1 version of Dynamics NAV. Withholding tax can be applicable to receivables and payables related transactions. Accordingly, these areas needed to be enhanced with customizations, additional setup areas were created, functionality to settle withholding tax was developed and statutory and statistical reports related to WHT have been provided.

### Petty Cash Manager

Not actually functionally required by the Thai authorities, but requested by most customers: A comfortable way to control and settle petty cash and purchase expenses in Dynamics NAV.

### Tax Settlement

After having started to use NaviWorld withholding Tax settlement tools, customers wondered why such useful functionality wasn't available for VAT in standard NAV. This led us to the idea to calculate, approve and settle all taxes in one and the same form.

### Check Payments

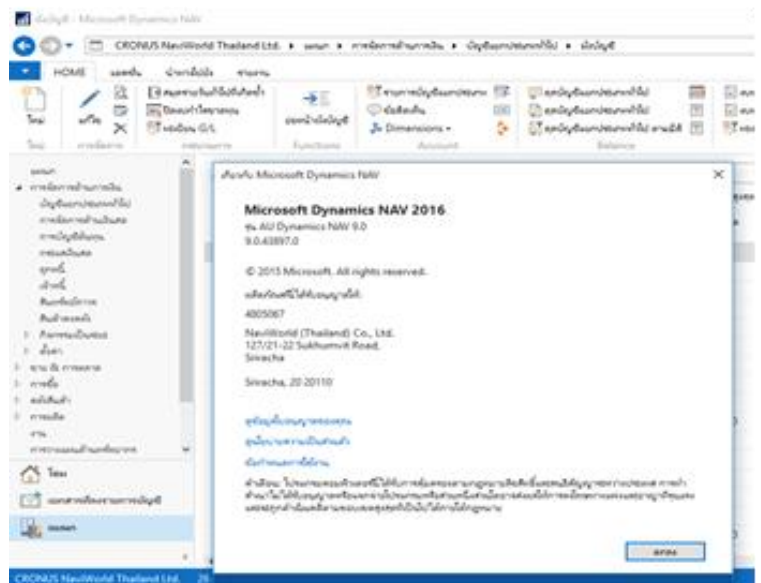
- Postdated checks
- Thai bank check formats
- Checks in installments

### Statements

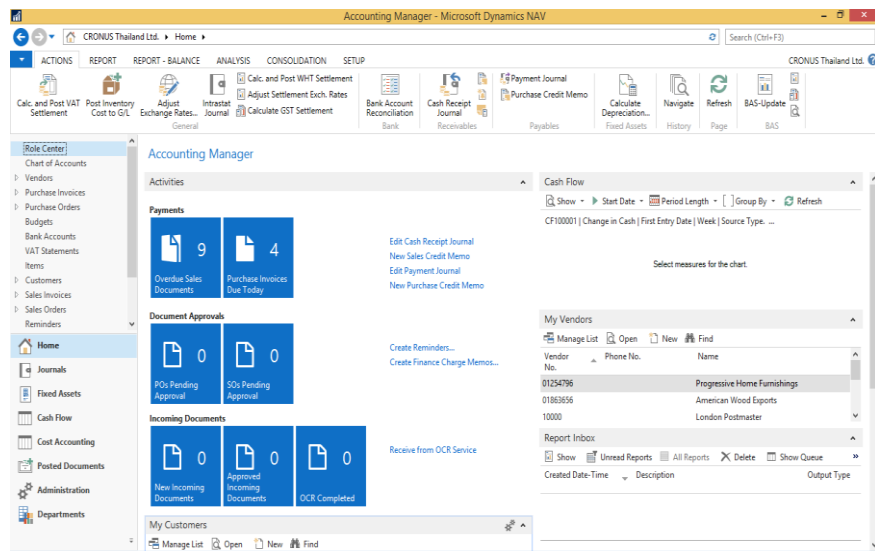
Missing in the world wide version of Dynamics NAV, NaviWorld has added a few standards formats of statements just about any company requires:

- Income Statement
- Balance Sheet
- Profit & Loss
- Cash Flow

Any company doing business in Thailand is required to submit certain statutory reports to the local authorities, which should preferably be available directly from the account software or ERP solution. As is the case with most international ERP solutions, even the Thai version of Dynamics NAV only provides a fraction of localized functionality demanded by customers. Companies using a global Dynamics NAV database template in Thailand face even greater challenges.



NaviWorld Thailand has therefore developed a localization package which is working with both, the Thai Dynamics NAV version as well as the worldwide (W1) version.



## Revenue Declaration Reports

### Statutory Reports

1. WHT Certificate 50 BIS
2. WHT Pon Ngor Dor 1
3. WHT Pon Ngor Dor 2
4. WHT Pon Ngor Dor 3
5. WHT Pon Ngor Dor 53

### Supporting Reports

1. Stock Movement
2. VAT Report Vendor
3. VAT Report Customer
4. Financial Analysis Report

### Optional

1. E-Payment (Krung Thai Bank)
2. Cheque Format
3. Electronic Signature
4. Workflow

### Vouchers

Though increasingly made redundant by electronic document approvals, most companies in Thailand still require printed hard copies for the formal approval or acknowledgement of certain transactions by an authorized signature:

1. Petty Cash
2. Payment (outgoing & incoming)
3. Posted Sales Invoice
4. Posted Purchase Invoice
5. Posted Cash Receipt
6. Posted GL Journal
7. Deposit Slip

### Thai Company Name

For some document Thai authorities require certain information -as for example the company name- printed in Thai script. NaviWorld customized functionality to add names or descriptions of master data in multiple languages and scripts. The relevant documents can consequently be printed with data captions in any language available from the translation tables.

### Language Pack for Thailand

**(Requires Thai language in the License)**

## Why NaviWorld?

NaviWorld is well known for its competences, reliability and innovative actions at a level beyond the average of the other providers of Microsoft Business Solutions and competitive ERP Solutions.

NaviWorld is the sole partner who certified the product with the Thai Revenue Department since 2000. Being certified, it gives our customer the confidence and assurance that system is fully compliant with statutory requirements and in Thai language, capable to process the financial data as required, generates all the specific reports in the right format using Thai script, and in the same time the data can be also used for corporate reporting in English or other languages. Over the years, we constantly added new features as required by local authorities and customers and in the same time performing the upgrades to the latest Dynamics-NAV versions.

Services provided by NaviWorld ranges from assisting customers with the selection, diagnostics, design, and project management, implementation, training and support. NaviWorld in Asia offers customers turn-key solutions implemented by skilled consultants, who understand the importance of delivering the complete scope of work within the agreed time and budget.

NaviWorld localization packages for Microsoft Dynamics further provides local business and statutory requirements, which is yet unparalleled by other leading international Business Solutions in Asia

### NaviWorld (Thailand) Co., Ltd |

**Sriracha Office:** 127/ 21 Sukhumvit Road, Sriracha, Chonburi, 20110 Thailand. Tel: +66-38-327138

**Bangkok Office:** Asoke Towers 219/34, 10th Floor, Sukhumvit 21 Road., Soi Asoke, North Klongtoey, Wattana, Bangkok10110 | Tel: +66 (0) 2- 258 1701 |

**|E-mail:** [info@naviworld-asia.com](mailto:info@naviworld-asia.com) | [www.naviworld-asia.com](http://www.naviworld-asia.com)