



NAVIWORLD ASSET MAINTENANCE MANAGEMENT

NAVIWORLD ASSET MAINTENANCE MANAGEMENT ADD-ON FOR MSD NAV – HIGHLIGHTS:

FACILITATE CONTROL OF THE MAINTENANCE ACTIVITIES:

- To the entire Assets, which is easier to comprehend and manage
- To generate simple day-to-day Maintenance requests with the help of service request
- Fast access to information
- Complex features like predicting the future performance of the Assets
- Integrating measuring tools and facilitating the predictions (Machine to Machine Interfaces)

MAKE MANAGEMENT INFORMATION EASIER TO COMPREHEND INCLUDING:

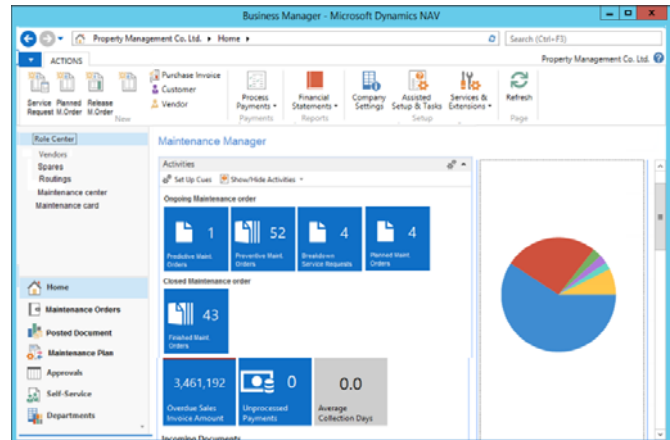
- Maintenance Order Management
- Cost of spare parts
- Rough information concerning Maintenance Personnel (Maintenance centers) load
- Cost due to Maintenance Activities

INTEGRATE ASSET MAINTENANCE MANAGEMENT WITH OTHER STANDARD MICROSOFT NAV MODULES:

- General Ledger
- Fixed Assets
- Cap. Requirement Planning
- Inventory
- Purchase and Payables

Asset Maintenance Management is totally integrated with other related modules like General Ledger, Inventory, Fixed Assets, Capital Requirement Planning and Purchase and Payables.

NAVIWORLD ASSET MAINTENANCE MANAGEMENT ADD-ON FOR MICROSOFT DYNAMICS NAV



Asset Maintenance Management Add-On for NAV will help you minimize downtime, manage your resources effectively, maximize profitability and secure the highest performance of your assets. It is providing you with rich functionality and plans for all kinds of preventive and predictive schedules.

Released Maintenance Order Lists

No.	Description	Maint. No.	Status	Maintena... Asset Type	Maintena... Asset No.	Search Description	Maint. Order Type	Due Date	Last Date Modified	Bloc...
ARE000094	Refill oil mercedes	MC102	Released	Fixed Asset	FA000020	REFILL OIL ...	Preventive	9/9/2018	9/9/2018	<input type="checkbox"/>
ARE000095	there is not changed Item fo...		Released	Work Center		THERE IS ...	Preventive	9/9/2018	9/9/2018	<input type="checkbox"/>
ARE000096	Change tires mercedes Rdj...	MC101	Released	Fixed Asset	FA000080	CHANGE T...	Preventive	9/9/2018	9/9/2018	<input type="checkbox"/>
ARE000097	Predictive maintenance	MC111	Released	Machine C...	420	PREDICTIV...	Predictive	9/9/2018	9/9/2018	<input type="checkbox"/>
ARE000098	Predictive maintenance	MC111	Released	Machine C...	420	PREDICTIV...	Predictive	9/9/2018	9/9/2018	<input type="checkbox"/>
ARE000099	Refill oil mercedes	MC102	Released	Fixed Asset	FA000020	REFILL OIL ...	Preventive	9/9/2018	9/9/2018	<input type="checkbox"/>
ARE000100	Cleaning Vessel 1000kg in w...	MC107	Released	Machine C...	440	CLEANING...	Breakdown	9/28/2018	9/9/2018	<input type="checkbox"/>
ARE000102	CNC machine	MC111	Released	Machine C...	420	CNC MAC...	Predictive	9/9/2018	9/9/2018	<input type="checkbox"/>
ARE000103	Assembly department	MC111	Released	Work Center	100	ASSEMBLY...	Predictive	9/9/2018	9/9/2018	<input type="checkbox"/>
ARE000104	Assembly department	MC111	Released	Work Center	100	ASSEMBLY...	Predictive	9/9/2018	9/9/2018	<input type="checkbox"/>

Maintenance Asset Type:	Fixed Asset	Due Date:	6/28/2017
Maintenance Asset No.:	FA000070	Status:	Order
Equipment Description:	Conveyor Computer	Maint. Order No.:	
Maint. Type:	Breakdown	Maint. Order Status:	
Maint. No.:	MC108	Maintenance Location Code:	SHOP

Service Request Lines	Service Request Lines	Service Request Lines	Service Request Lines	Service Request Lines	Service Request Lines	Service Request Lines	Service Request Lines	Service Request Lines	Service Request Lines
Service Request No.	Maint. Object No.	Maint. No.	D.	Repair Status	Needed by Date	Fault Reason Code	Fault Area Code	Symptom Code	
MSE008	AM0001	MC108	B.	IN PROCESS	7/26/2017	DMO	6	5	

ASSET MAINTENANCE MANAGEMENT SETUP

- Asset Management Setup
- Time, shifts, locations, groupings and calendar



PRODUCT FEATURES:

AMM – Basic

- Maintenance Card
- Maintenance Work Orders
- Spare parts Management
- Consumption
- Main. BOM
- Maintenance Routing
- GL Integration
- Maintenance Costing
- Budget
- Preventive Maintenance

AMM – Planning

- Advanced Maintenance Requirement Planning
- Maintenance Work Centers
- Maintenance Calendar
- Service Requests

AMM – Plant

- Auto. Demands for Maintenance Into Manufacturing Centers

AMM – Alternative Spare Parts

- Working with alternative spare parts throughout the Maintenance operations

AMM – Advanced

- Predictive and Critical Maintenance
- Maintenance Budget
- Subcontracting
- WIFI/Device/Machine Integration
- Document Center (ISO, Safety, Regulations)
- Mobile Devices

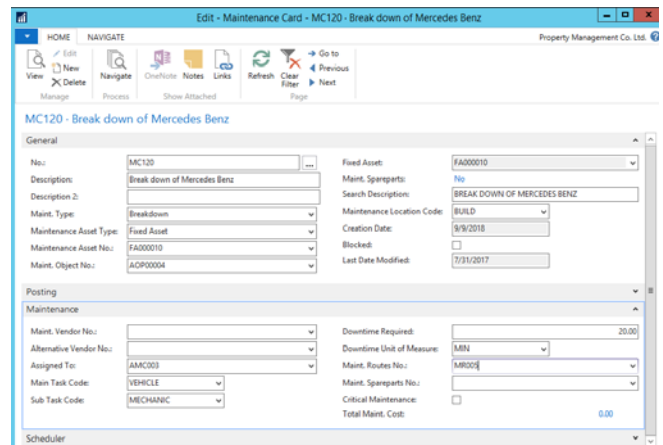
RECORDING SERVICE REQUESTS AND SETTING UP A MAINTENANCE CARD

Different cards for the Maintenance types available can be set up, to record the parameters according to type, to plan the spare parts and Maintenance routes and use this information for scheduling Maintenance orders.

The Maintenance Card:

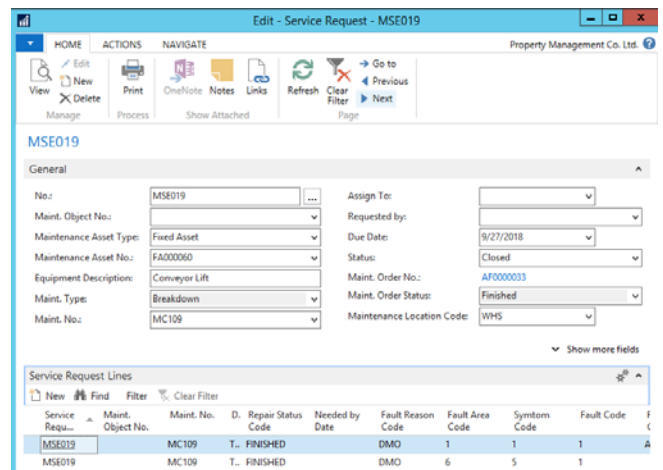
- The Maintenance card defines the Maintenance activity and acts as a Maintenance order reference template
- The Maintenance card is the central instance for executing any Maintenance activity
- The Maintenance card indicates Maintenance type - preventive, breakdown, general, safety, callout, shutdown & predictive. Basic information is entered related to the tasks, locations, etc.

- The spares required for the execution of the Maintenance activity are assigned on Maintenance card as so called Maintenance spare parts
- The individual work-steps needed to complete the Maintenance tasks are assigned on the Maintenance card as Maintenance routes
- Grouping the Maintenance activities to simplify assigning the tasks and preparing an analysis



The Service Request:

- Used to notify the malfunctions and other exceptional circumstances that require prompt and earlier action
- Documenting the functional location and the affected piece of equipment and assets by notifying through a service request
- Orders from service requests for immediate Actions



SPARE PARTS MANAGEMENT

- Manage the entire spare part stock
- Multiple locations, Unit Of Measures and various spare part types
- Spare part stock parameters and automatic reordering



MAINTENANCE SCHEDULER AND MAINTENANCE PLANNING WORKSHEETS

Planning preventive Maintenance for different equipment is based on the scheduler and repair worksheets.

Maint. No.	Description	Maint. BOM	Maint. Type	Maint. Asset	Maint. Asset No.	Service Date	Next Service Date	Act. Sch.	Frequency	Maint. Vendor No.
MC101	Change tires merce...	<input checked="" type="checkbox"/>	Preventive	Machine Ce...	400	6/8/2017	7/8/2017	<input checked="" type="checkbox"/>	1M	
MC101	Change tires merce...	<input type="checkbox"/>	Preventive	Fixed Asset	FA000010	6/7/2017	7/7/2017	<input checked="" type="checkbox"/>	1M	01863656
MC101	Change tires merce...	<input checked="" type="checkbox"/>	Preventive	Fixed Asset	FA000080	6/23/2017	7/23/2017	<input checked="" type="checkbox"/>	1M	
MC102	Refill oil mercedes	<input checked="" type="checkbox"/>	Preventive	Fixed Asset	FA000020	6/8/2017	9/8/2017	<input checked="" type="checkbox"/>	3M	
MC106	Inspect Conveyor B...	<input checked="" type="checkbox"/>	Preventive	Work Center	400	6/15/2017	9/15/2017	<input checked="" type="checkbox"/>	3M	10000
MC111		<input type="checkbox"/>	Preventive	Work Center		6/21/2017	6/21/2017	<input checked="" type="checkbox"/>		
MC111	Predictive mainten...	<input checked="" type="checkbox"/>	Predictive	Machine Ce...	420	6/29/2017	6/29/2017	<input checked="" type="checkbox"/>		01387796

Since applying preventive Maintenance to all equipment is uneconomical, only required equipment linked to appropriate cards with probable service dates in the scheduler lines will be serviced or repaired.

- Scheduler used as a planning tool and to enter preventive and predictive Maintenance data
- Frequency and duration of occurrences for preventive and predictive Maintenance is specified.
- Maintenance planning worksheets generate preventive and predictive Maintenance orders and determine which activities are due for the period selected
- The suggested Maintenance planning worksheet lines are converted to any type of available Maintenance orders and suggestions are made for spare parts procurements

POST CONSUMED SPARES AND UTILIZED TIME FOR MAINTENANCE IN SEPARATE JOURNALS

Spares that are consumed for any Maintenance order in the spare parts journals are being recorded. Automatic quantity adjustments in the inventory and cost updates in the appropriate ledgers are made. The actual operations that are performed for a particular Maintenance job through any Maintenance order is posted through Maintenance journals, updating the G\L and relevant ledgers.

MAINTENANCE ORDERS

A Maintenance order contains information about equipment type and No., date scheduled, status,

and required spares etc. Orders constitute the central part of all Maintenance jobs:

- Authorizes and directs a personnel, shop or department to do a certain job
- The execution of the Maintenance task is initiated and controlled by Maintenance orders
- Uses the Maintenance routes as the basis for scheduling
- Allocated costs and actual costs for executing a Maintenance activity
- Suggests the starting and ending date and times, individual operational steps and the amount of spares required and their due dates.

Edit - Predictive Maintenance - DPM000001

General

No.: DPM000001 Normal Value: 10,000.00

Maintenance Asset Type: Machine Center Max Range: 8,000.00

Maintenance Asset No.: 420 Min Range: 5,000.00

Maintenance Asset Description: CNC machine Max Tolerance (%): 500.00

UOM: KM Min Tolerance (%): 3,000.00

Last Date Modified: 9/9/2018

Maint. Type: Predictive

Maint. No.: MC111

Service Request No:

Measurement Code:

Maintenance Order No.:

Use Values: Both

Current Max Value: 10,000.00

Current Min. Value: 10,000.00

Edit - Predictive Maintenance Data

Predictive Maintenance Data

Predict... Maint. ...	Maintenance Order No.	Value	UOM	Date	Time
DPM000001	ARE0000001	10,000.00	KM	6/7/2017	4:22:20 PM

COSTING, BUDGET PLANNING AND ANALYSIS

The Maintenance accounts can be seen on the Maintenance chart of accounts with Maintenance budgets and analysis by advanced dimensions.

Maintenance Costing

- Estimated and actual cost for each Maintenance job
- Cost by labor, subcontractor, overheads and spare parts
- Integrates with GL Maintenance accounts
- Provide actual Maintenance cost information directly on the fixed asset

Maintenance Budgets

- View Maintenance chart of accounts
- Plan your Maintenance budgets
- Analyze the budgets with various parameters



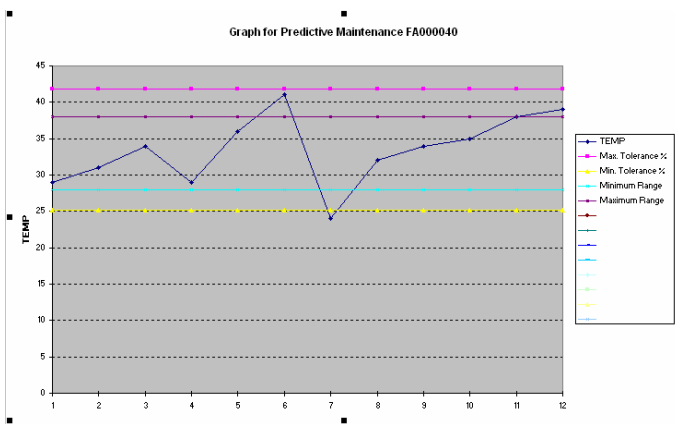
MAINTENANCE CENTER

- Manage the capacity of the entire Maintenance
- Specify a machine or a person as a capacity
- Define the cost of a capacity
- Provides load, task and job scheduling

PREDICTIVE AND ALERT MAINTENANCE

The down time of highly productive machines can be reduced by predicting the machines performance for the future and taking necessary actions on the machine to function properly for efficient production.

It predicts and alerts the respective people for further actions to be taken as shown in the figure.



DOCUMENT CENTER

All the necessary Maintenance documents stored anywhere in the network, can be connected to the Asset Maintenance Management Module. Incoming document feature is embedded to AMM module. Additionally such documents can be connected to the

Maintenance work orders which are released to the shop floor to provide the artisans with complete and accurate information.

- Measurement & Quality inspections of Maintenance
- Various documents related to Maintenance (ISO, safety, instructions, manuals etc.)

The user can actually select the documents to be printed at the time the work orders are printed.

MAINTENANCE SUBCONTRACTS

Any Maintenance activity can be outsourced to the specified vendors by specifying which vendor the Maintenance activity belongs also you can specify the subcontracts partially by setting up the vendor numbers on Maintenance routes and spares.

- Outsource the whole Maintenance activity
- Outsource only a part of the Maintenance activity
- Choose whether the spares are supplied by the vendor or in-house

ADVANCED ASSET MANAGEMENT

- Maintenance planners can predict the performance of the machines with predictive Maintenance and increase the production with maximum efficiency
- Artisans can connect the measuring tools to the asset management so that it has machine-to-machine interface and give you the complete information of the performance of the machine and the necessary steps can be taken depending upon the results obtained.



- Any Maintenance related documents (like ISO, safety, regulations, specifications, etc.) can be linked to Asset Management using document management and can be printed automatically by selecting only the necessary documents at the time of releasing the Maintenance orders
- Ease for the managers to check the pending critical Maintenances and take necessary actions
- Online access to information's from any smart phone, tablets or PDA.

IMPLEMENT WITH MINIMUM TIME AND EFFORT

Since Asset Maintenance Management is already fully integrated with Microsoft Dynamics NAV, it is fast to implement. You will not need to spend time and money on integrating it with an accounting and business management solution. The user interface is also the same as the highly acclaimed graphical user interface of Microsoft Dynamics NAV, so users will soon be up to speed across the whole organization.

MEET TODAY'S AND TOMORROW'S REQUIREMENTS

With facilities to control all aspects of your asset Maintenance management, this solution gives you all the support you need to meet national and international standards of Asset Maintenance Management.

SYSTEM REQUIREMENTS

- Microsoft Dynamcnics Nav 2017
- Microsoft Windows Server
- Microsoft SQL Database

Address: **Office in Bangkok**

NaviWorld Group Limited
Asoke Towers 219/34, 10th Floor
Sukhumvit 21 Road, Soi Asoke, North
Klongtoey, Wattana,
10110 Bangkok, Thailand
Tel: +66 02 258 1701
+66 02 258 1702
+66 (086) 316 8161

Office in Siracha

127/21 Sukhumvit Road
Sriracha, 20110 Chonburi, Thailand
Tel +66 38 327 138
+66 (086) 313 6165
Fax +66 38 327 139
Email: info@naviworld-asia.com
Website: [www.http://naviworld-asia.com](http://naviworld-asia.com)